

Richmond Park residential complex

Location

Iskele, Bogazici



About the project



Developer	Dashad Group	
Start of sale	01.07.2021	
Key handover	2025	
Houses/blocks	11	
Building floor	2 Min	2 Max
Units total	3 - 3+1 Bungalows, 4 - 3+1 Villas, 3 - 4+1 Villas	

Distance to the sea - 1000 m

Distance to key locations:

Yenibogazici area, 3 minutes from the historical ancient city of Salamis and 5 minutes from the city of Famagusta

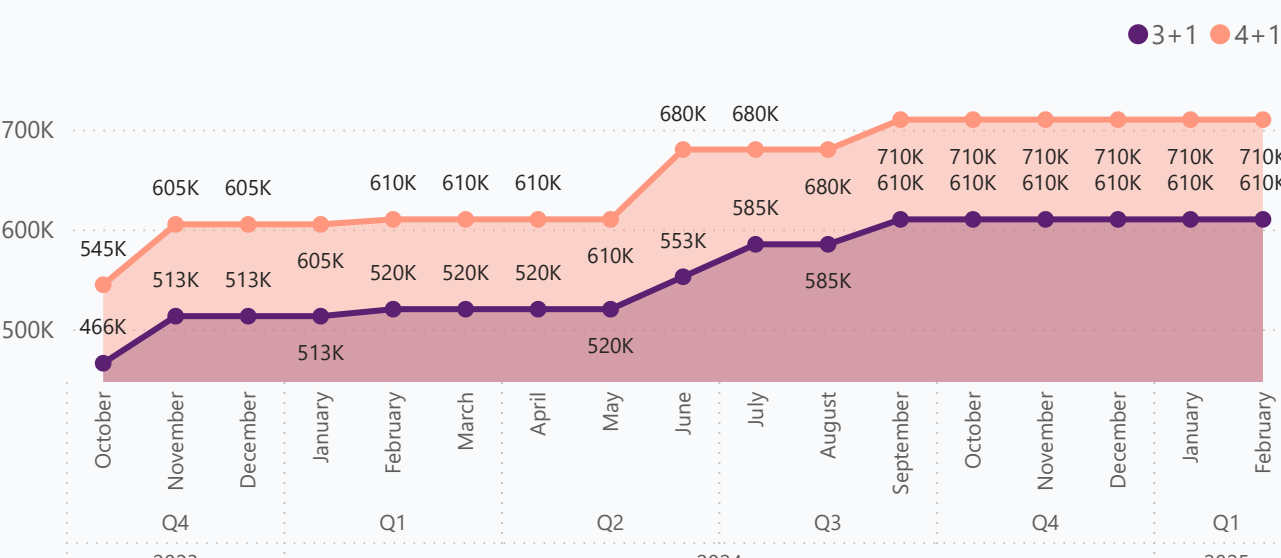
Richmond Park Residence is located in the area of the small town of Yeni Bogazici in Northern Cyprus, a short walk from Yeni Bogazici Sandy Beach and just a three-minute walk from the historic town of Salamis, as well as a five-minute walk from Famagusta. This place is ideal for those who are engaged in an active life, but at the same time appreciate peace and privacy.

Complex infrastructure

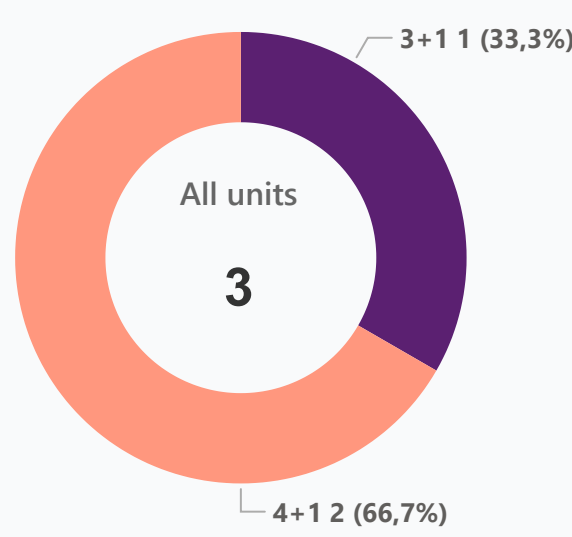
- Bar
- BBQ area
- Beach
- Café
- City center
- Historical sight
- Open pool
- Parking
- VRF system

Available units3 / 10 total

Median price per unit, K GBP



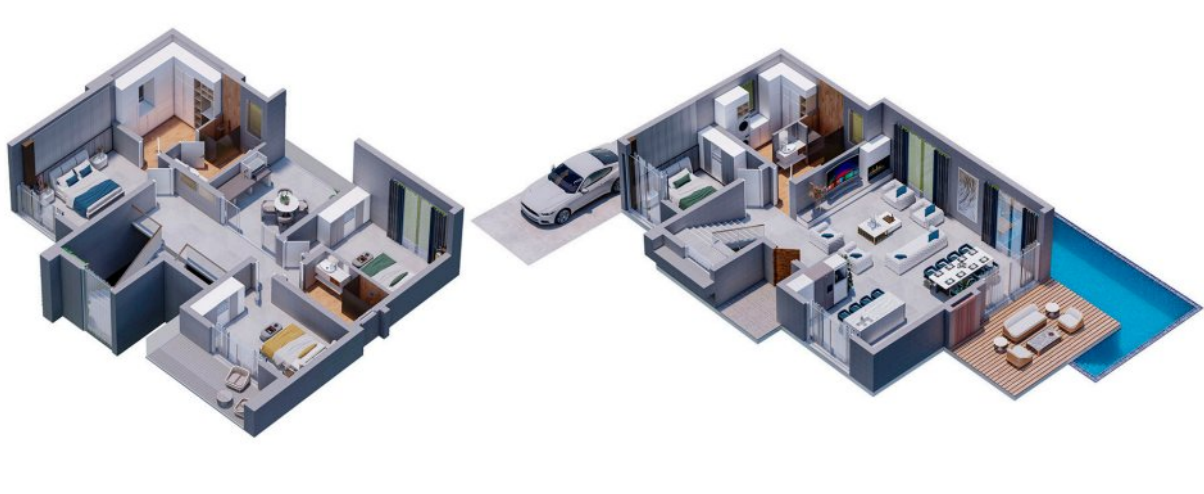
Structure of available units



Plans



3+1



4+1

Payment plans

Deposit (non-refundable) 5 %

Option 1

Down payment 45 %
Installments months 20% till key, 30%...
Discount -
Offer -

Option 2

Down payment -
Installments months -
Discount -
Offer -

Option 3

Down payment -
Installments months -
Discount -
Offer -

Option 4

Down payment -
Installments months -
Discount -
Offer -

Special offer



Fully furnished design package

Rental guarantee

45 %

Trafo 5500 GBP

Resalo -

Maintenance fee 65-120 GBP

Rental services -

Details

Bedrooms	Subtype	Block	Unit №	Floor	View	Bathroom	Internal area, sq. m	Balcony/ Terrace, sq. m	Rooftop terrace, sq. m	Garden, sq. m	Gross covered area, sq. m	Current price, GBP	Price per sqm, GBP
3+1	Villa	Villas	10	0		2	219	30			249	610 000	2 450
4+1	Villa	Villas	3	0		3	293	50			343	710 000	2 070
4+1	Villa	Villas	6	0		3	293	50			343	710 000	2 070

Interior specification



Interior specification

- Beach
- Ceramic flooring
- City center
- Double glazed windows
- Fitted wardrobes in each bedroom
- Historical sight
- Laminate flooring in the bedrooms
- Natural marble or travertine window sill
- Steel ladder with wood step
- Toilet integrated in the walls

Exterior specification



Exterior specification

- BBQ place on the roof
- Beach
- City center
- Glass fence balcony
- Historical sight
- Landscape design
- Private Garden
- Private pool

Location of complex

